



Manufacturing

www.MTecmfg.com

MT200 SERIES is the industry leading, SAFE, patent-pending spring-loaded hinge. The **MT200 SERIES** is fully adjustable for the consumer needs. The hinge eliminates the dangerous overhead spring and cable design. Unlike current spring hinges, the **MT200 SERIES**, is fully encapsulated for a streamline, industry look. Not only does it look good, we use the finest, weather and wear resistant components. The **MT200 SERIES** is proudly engineered and manufactured in our facility in Sturgis, MI and backed with a 2-year limited warranty.

- Drastically reduces the weight of the ramp door
- Fully Adjustable
- Weather and wear resistant components
- Made in the USA
- Engineered & manufactured in our facility in Sturgis, MI
- Eliminates the dangerous overhead spring and cable
- Can be welded or bolted on
- Field tested in harsh salt and freezing environments.
- 100% customer approval



MTec Models

The MT200 Series comes in three models. All capacities from hinged weight of the door. All models measure **14.39"** in length.

1. **MT200**: Capacity: **0** pounds. (Idler hinge)
2. **MT205**: Capacity: **10-20** pounds.
3. **MT210**: Capacity: **20-40** pounds



MTec Capacity Calculations

Example

An 80-inch-wide ramp door weighs 160 pounds which will weigh 80 pounds hinged.

This ramp will need (2) MT210 hinges to compensate for the 80 pounds of hinged weight.

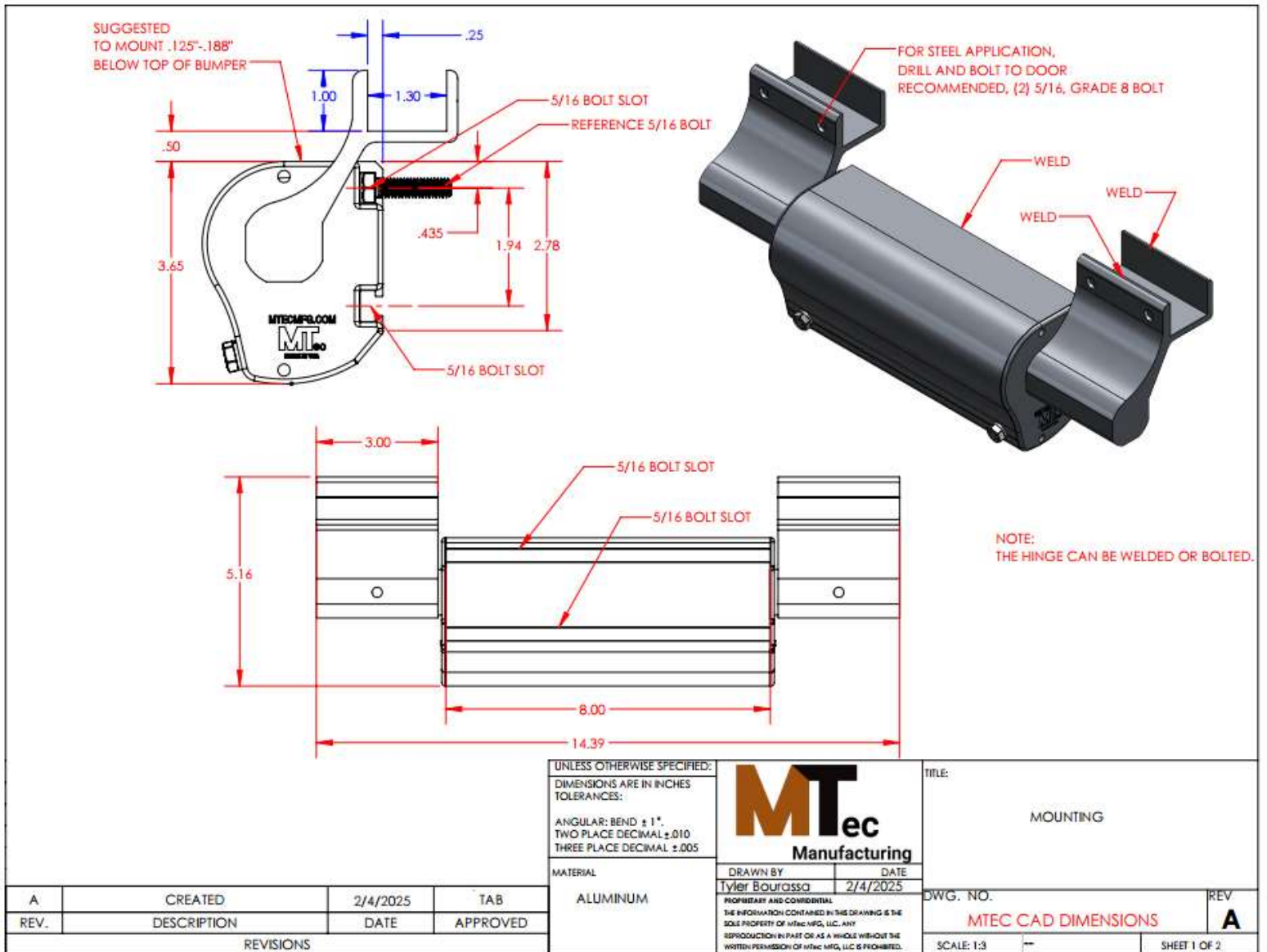
Two MT210 hinges combined have the capacity from 40-80 pounds. With only using two MT210 hinges this means the hinges are “Maxed out”. So, this no room for the consumer to adjust the ramp if any extra weight is added. The installer may decide they want to leave some room for adjustment, so they may install an additional hinge MT205. This would give the hinges capacity from 50-100 pounds, which would leave 20 pounds (hinged) of extra adjustment if needed.

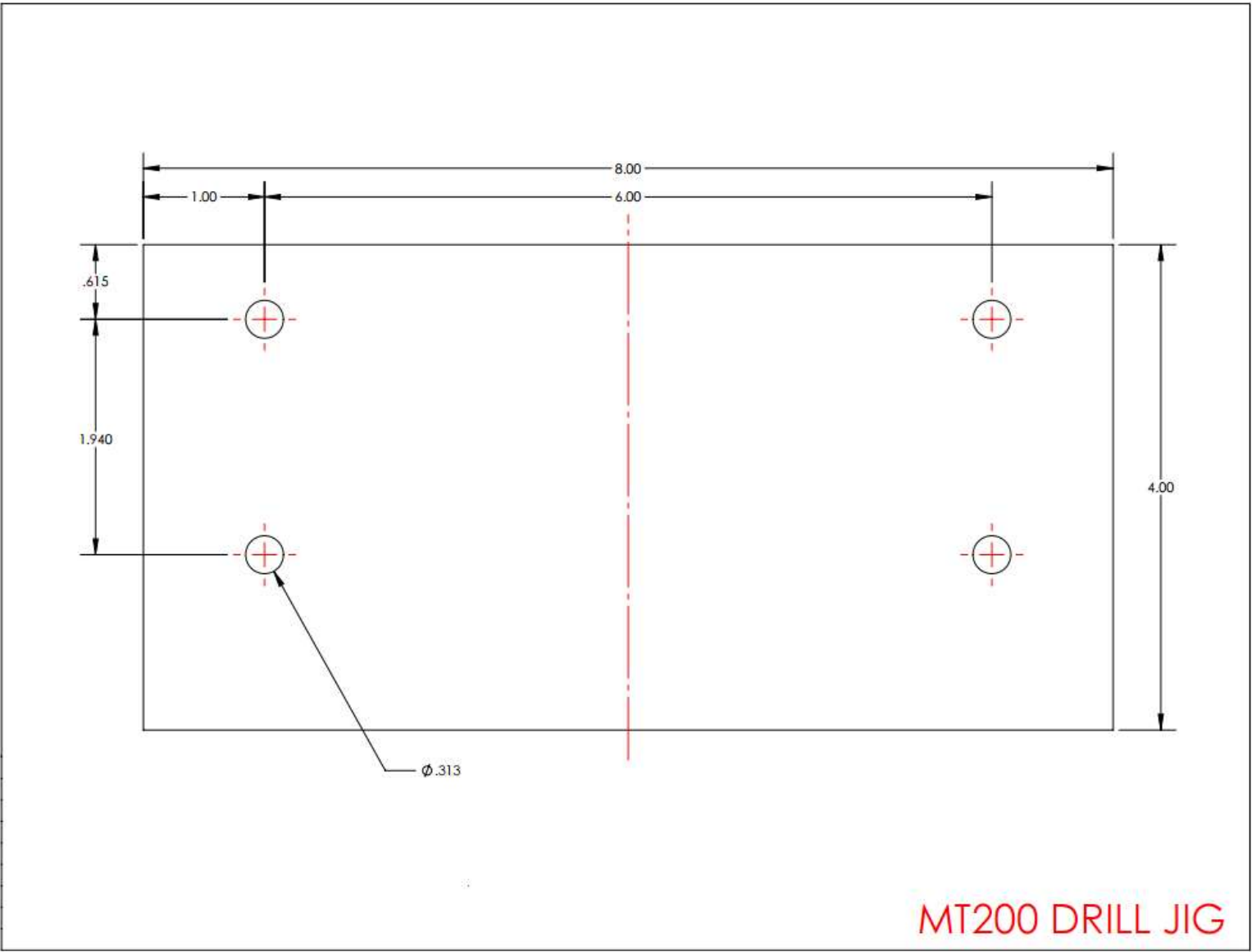
Disclaimer: If the hinges have too much capacity the ramp may not fully open and levitate above the ground and extra weight will need to be added. It is suggested to aim for the middle capacity so each hinge is adjusted and gives the ramp some spring back and the ramp can have weight added if needed.

MTec Drawings

.step files available upon request.

If the hinge channel does not fit your ramp tube size, a new channel extrusion could be considered.

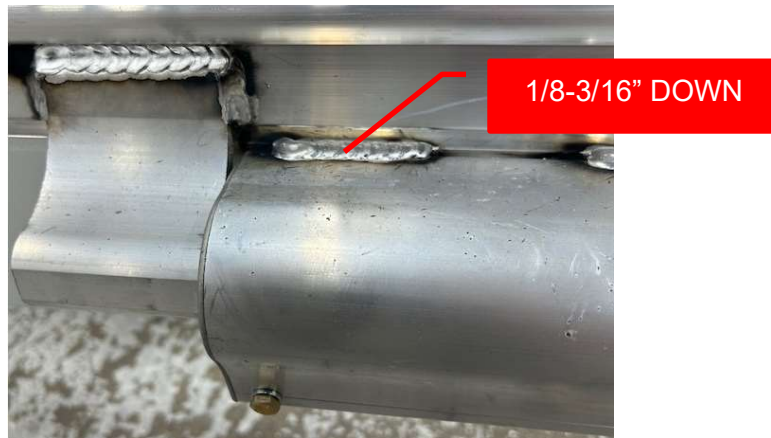




MT200 DRILL JIG

MTec Hinge Install

Suggested top of hinge to the top of the bumper is 1/8"-3/16". The hinges are designed to either be welded or bolted to the trailer. In the case of the hinges being too tight to drop down 1/8"-3/16", you can back both bolts a turn out for ease of installation.



MTec Adjustment

WARNING DO NOT REMOVE BOLTS!

Please see figure below. Do not loosen bolt past this point. When the bolt is loose, the lock washer should spin freely.



1. Use 7/16 socket or wrench. **NO POWER TOOLS.**
2. Each bolt can be tightened a total of **12-13** clock wise rotations from the loosened state. Be sure to tighten both bolts evenly. The bolts should tighten or loosen with ease. When the hinge is fully adjusted you should feel resistance and the bolt bottom out, stop at this point do not try to tighten any more.
3. **BOLTS SHOULD TURN EASY BY HAND. DO NOT OVER TORQUE. OVER TORQUING MAY RESULT IN A BROKEN COMPONENT AND VOID THE WARRANTY.**
4. It is suggested to fully adjust one hinge (if possible), to give the door the spring back effect when opening the door. By doing this the door feels lighter.



MTec Customer Care

MTec uses high quality components to ensure best product possible. The hinge is designed to have superior resistance to corrosion and requires very little maintenance.

For areas that are exposed to road salt, we suggest to keep the hinges washed down after long period of exposure. When storing the trailer, please ensure the hinge is washed off and lubricated.

We suggest lubricating periodically to ensure the best performance possible. In very rare cases there may be a noise sound coming from your hinges. In this case lubricate, then open and close the door a few times, until the noise disappears.

For lubrication, 3-IN-ONE Garage Door Lubricant or similar lubricant is suggested. For the three lubrication points, please refer below. Excess lubricate will drain out of bottom hole.



TERMS OF USE, WARRANTY & LIABILITY WAIVER

MTec Manufacturing LLC, offers its products with the terms, conditions and notices as follows:

Terms of use

This product is offered to you to be welded or bolted on your trailer for ramp doors only.

Exclusive Obligation

This product may not be used for unlawful purposes and that use is expressly prohibited under the terms and conditions of its use.

Use Limitation

You may not modify, copy, or reproduce this product, MTec hinges are made of different metal and this product is designed to be welded (on Aluminum) or bolted on trailers for ramp doors only. The product is not intended for any other applications, due to the risk of injury.

Warranty

This product is warranty against any defective material or workmanship for a period of two years from the date of shipment. **Any product determined by the manufacturer to be defective will be replaced in whole after providing part number and photos.** No labor cost or other claims for damages will be allowed. Product shall not be returned to MTec Manufacturing LLC without prior written authorization.

The adjustment needs to be done by a servicing dealer.

Limitation of Liability

In no event shall MTec Manufacturing LLC, be liable for any direct, indirect, punitive, special consequential damages whatsoever arising out of or connected with the use or misuse of these products.

Other Statements

MTec Manufacturing LLC, ORAL OR OTHER WRITTEN STATEMENTS, DO NOT CONSTITUTE WARRANTIES, shall not be relied upon by the buyer, and is not part of the contract for sale or this limited warranty.

Entire Obligation

The TERM OF USE, WARRANTY AND DISCLAIMER, document states the entire obligation of MTec Manufacturing LLC, with respect to the products. If any part of this disclaimer is determined to be void, invalid, unenforceable or illegal, including, but not limited to the warranty disclaimers and liability disclaimers and liability limitations set forth above, then the invalid or unenforceable provision will be deemed superseded by the valid, enforceable provision that most closely matches the intent of the original provision and the remainder of the agreement shall remain in full force and effect.

General

This disclaimer statement is governed by the laws of the State of Michigan, USA. You hereby consent to the exclusive jurisdiction and venue of the courts of competent jurisdiction, USA, in all disputes arising out of or relating to the use of this product. Use of this product is unauthorized in any jurisdiction that does not give effect to all provisions of these terms and conditions, including without limitation this paragraph.

Modification of Terms and Conditions

MTec Manufacturing LLC, reserves the right to change the terms, conditions and notices under which their products are offered.